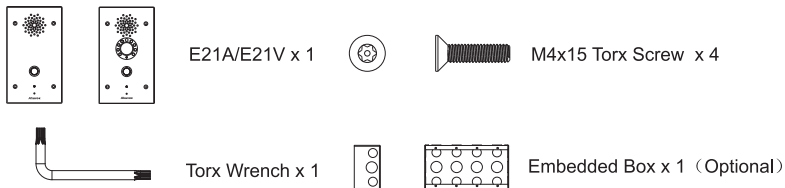
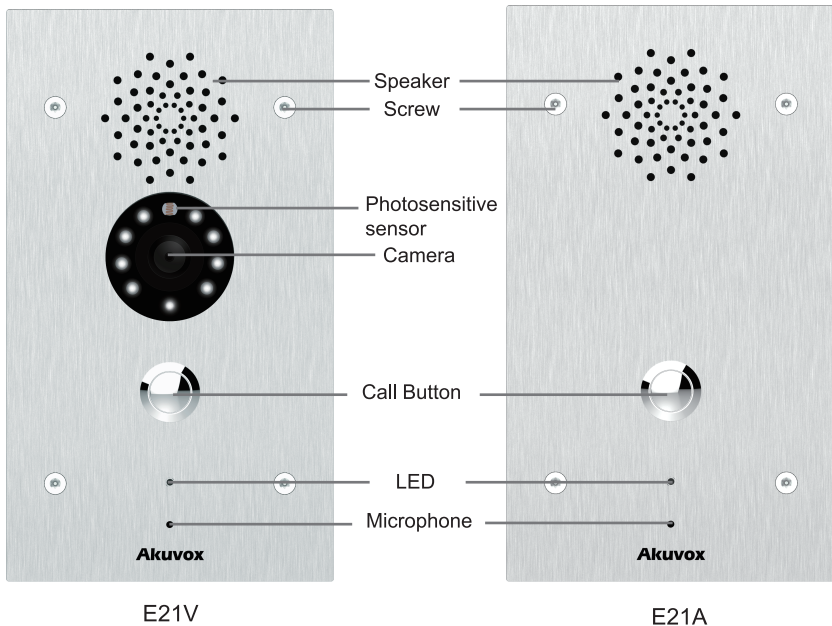


Unpacking

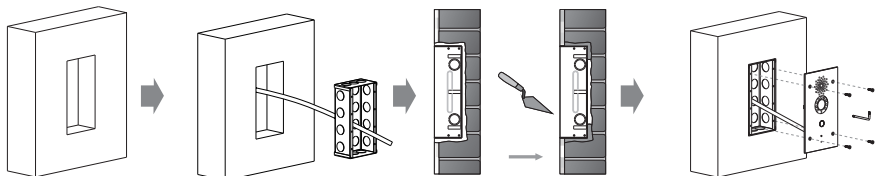
Please make sure the package contains the following items:



Product Overview



Installation



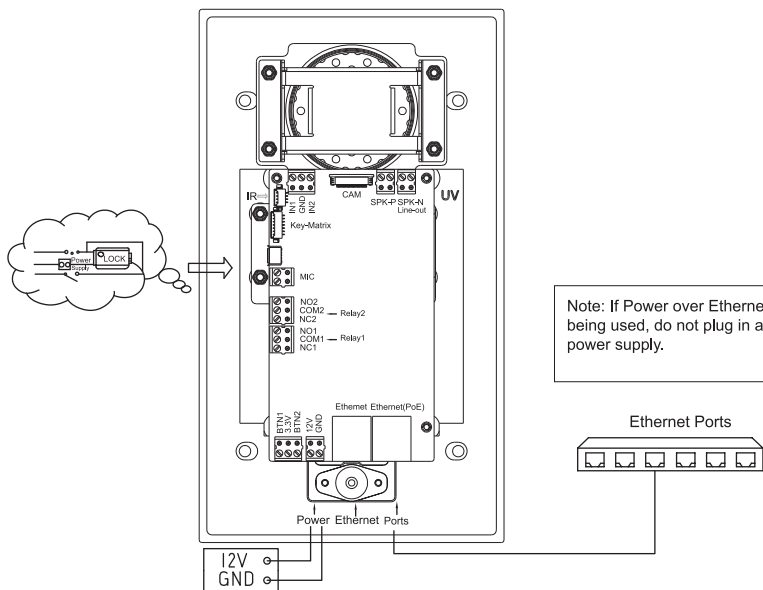
According to the position of the cable, cut a square hole in the wall of the height of 190mm, width of 100 and depth of 60 mm that can accommodate and through out all necessary cables.

Unclench suitable cable holes of the embedded box, then insert the embedded box into the square hole on the wall and route through all cables.

Use cement or non-corrosive structural adhesives to fill the gap between the wall and embedded box. Wait the adhesive material desiccation, go to the next step.

Fix E21X on the embedded box with four M4x15 Torx screws.

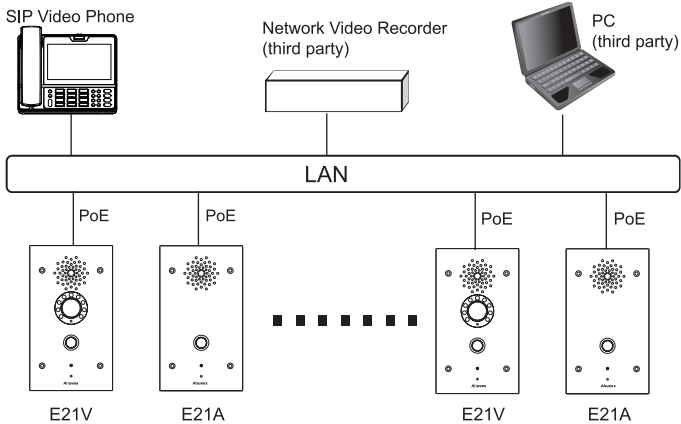
Main Unit Connectors



Note: If Power over Ethernet is being used, do not plug in another power supply.

E21X Quick Guide

Application Network Topology



Configuration

1. Access the Web UI: Input the IP address into browser to configure the phone.
2. Account Registration: On web UI, go to the path: Account -> Basic to register an account and fill in the account information. (***Please refer to user manual for more information***)
3. Push Button Configuration: On web UI, go to the path: **Intercom -> Basic -> Push Button** to configure the call number.
4. DTMF code Configuration: On web UI, go to the path: **Intercom -> Relay -> Relay ID/DTMF** and choose the DTMF code number in corresponding area.

IP Announcement

1. While E21X starts up normally, hold the call button for several seconds after LED light turns blue, the voice system will enter IP announcement mode.
2. In announcement mode, the IP address will be announced periodically.
3. Press Call Button again to exit the announcement mode.

* If no IP address has been obtained, E21X announces "IP 0.0.0.0".

Operation

Make a call:

1. Press the call button to call indoor SIP Phone, video call is only for E21V.
2. During the talk, a called party can press predefined DTMF code number to open the door.

Receive a call:

E21X supports Auto Answer by default. Incoming calls will be answered automatically.

LED Status Information

LED Status		Description
Blue	Always on	Normal status
	Flashing	Calling
Red	Flashing	Network is unavailable
Green	Always on	Talking on a call
	Flashing	Receiving a call
Pink	Flashing	Firmware upgrading

Note: For more LED settings, please refer to E21 web interface.

Notice Information

Akuvox E21X firmware contains third-party open source software under the terms of the GNU General Public License(GPL). Akuvox is committed to meeting the requirements of the GNU General Public License (GPL) and will make all required source code available.

The source code of software under the terms of GNU GPL can be downloaded online: <http://www.akuvox.com/gpl>.

Information contained in this document is believed to be accurate and reliable at the time of printing. This document is subject to change without notice, any update to this document can be viewed on Akuvox' s website: <http://www.akuvox.com> © Copyright 2019 Akuvox Ltd. All rights reserved.



AKUVOX (XIAMEN) NETWORKS CO., LTD.

ADD: 10/F, NO.56 GUANRI ROAD, SOFTWARE PARK II, XIAMEN 361009, CHINA
www.akuvox.com



YS21000026